

Figure E.1. Combined CO and HC Initial Test Failure Rates, 1997 Arizona v. Colorado IM240, Selected Car Models

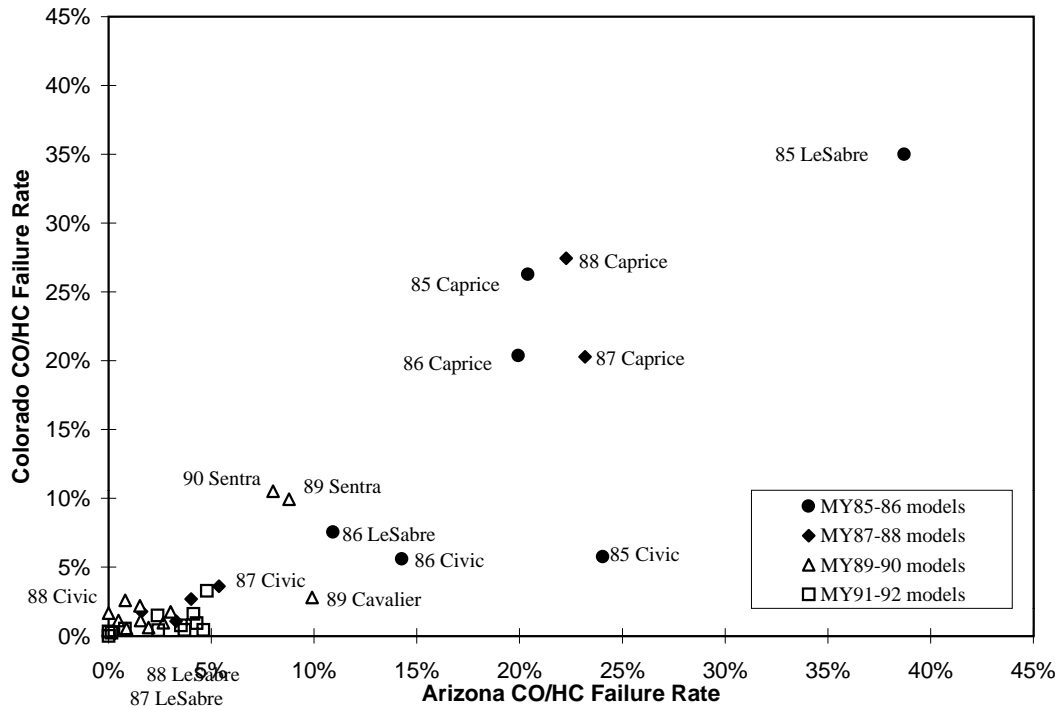


Figure E.2. Initial CO Failure Rate, 1996 Arizona v. Colorado IM240, 60 MY92 Car Models with at least 100 individual cars tested

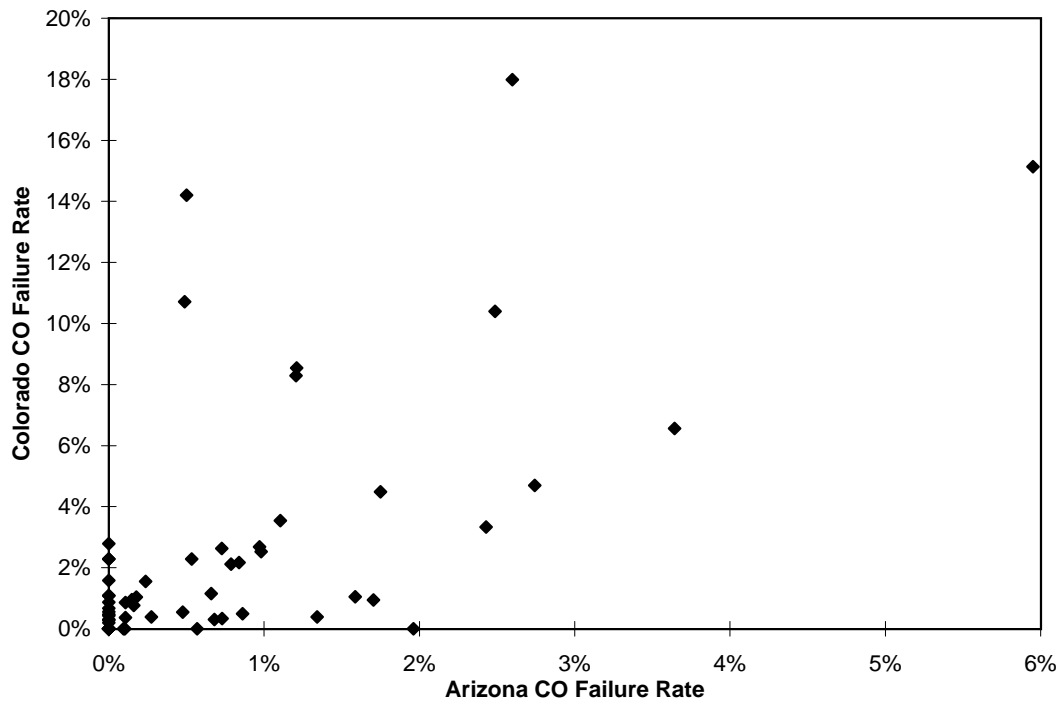


Figure E.3. Average CO v. CO Failure Rate, 1996 Colorado Initial IM240 Tests, MY92 Car Models with at least 100 individual cars tested

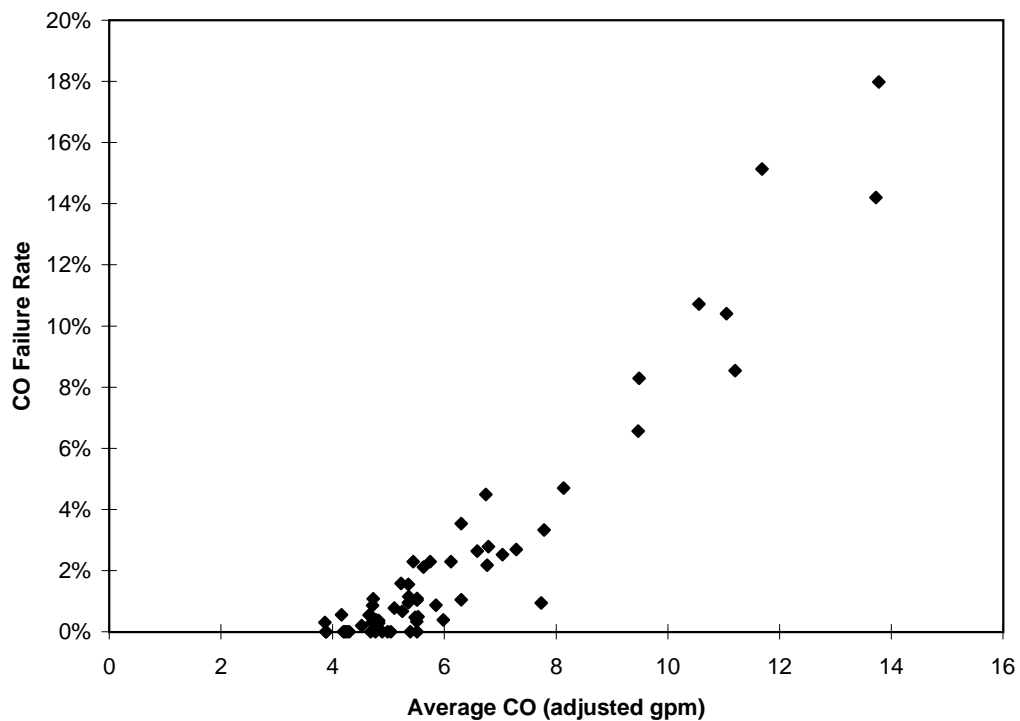


Figure E.4. Average CO gpm, 1996 Arizona v. Colorado Initial IM240 Tests, 60 MY92 Car Models with at least 100 individual cars tested

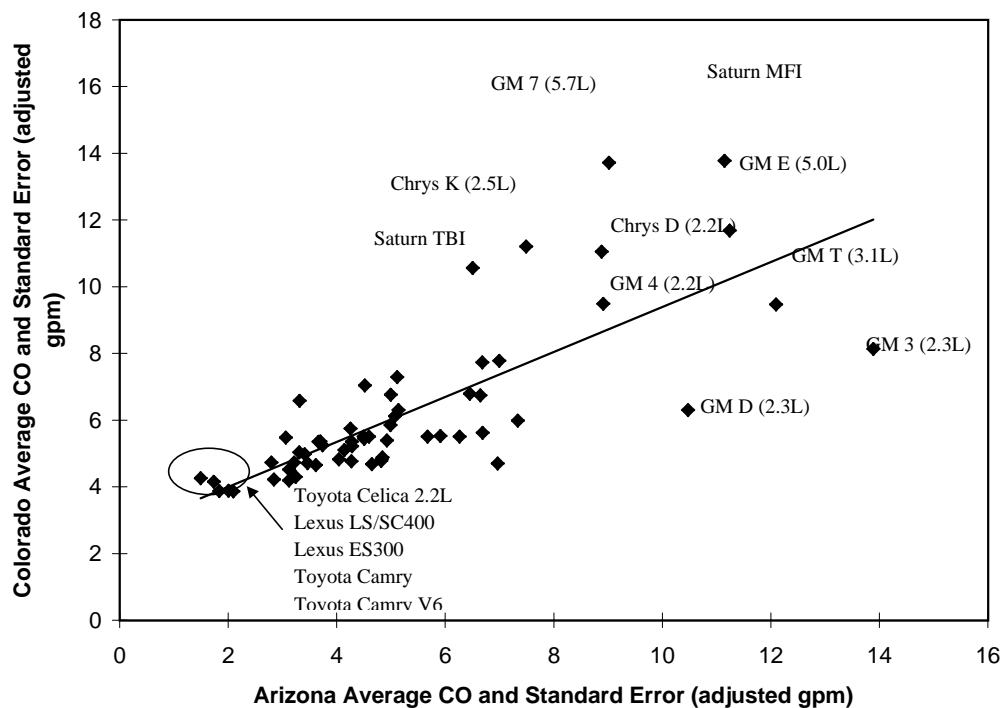


Figure E.5. Average HC gpm, 1996 Arizona v. Colorado IM240, 60 MY92 Car Models with at least 100 individual cars tested

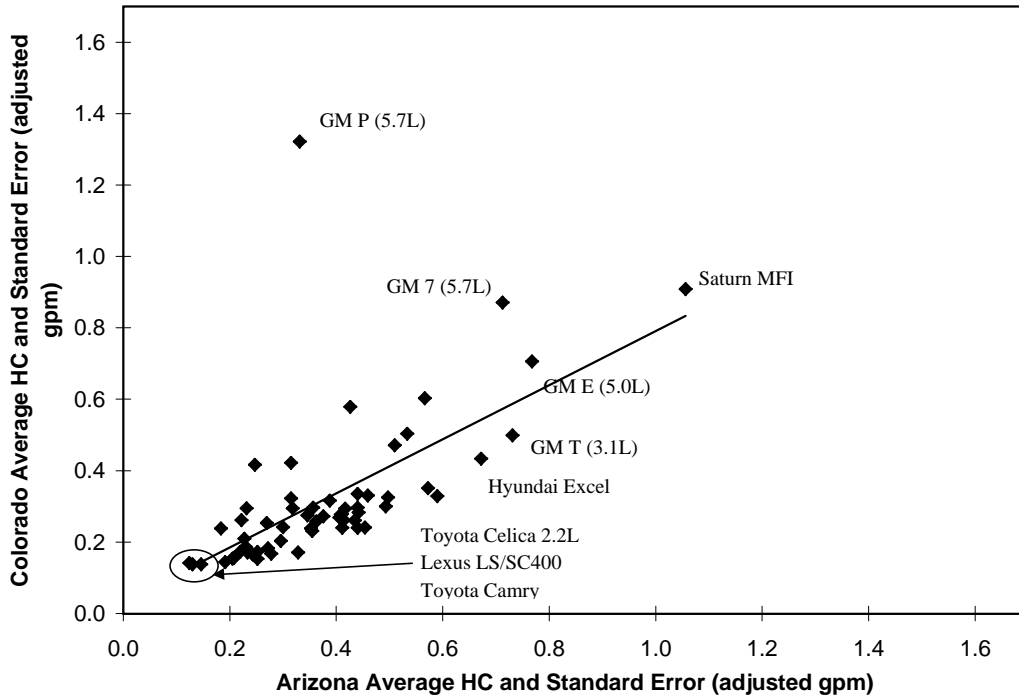
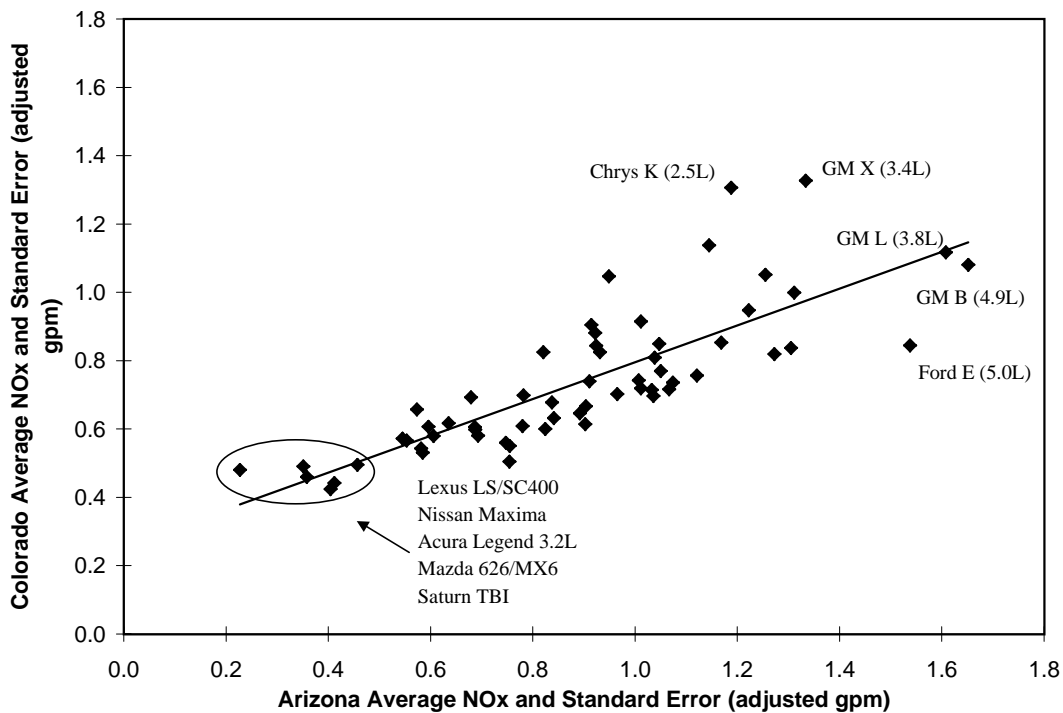


Figure E.6. Average NOx gpm, 1996 Arizona v. Colorado IM240, 60 MY92 Car Models with at least 100 individual cars tested



Arizona Average NOx and Standard Error (adjusted gpm)