

**Microscale Carbon Monoxide Impact Assessment
for the Atlantic Steel Development Project**

**Appendix 4
Maximum Predicted Carbon Monoxide Concentrations**

**Randall Guensler, Ph.D.
Michael O. Rodgers, Ph.D.
William H. Bachman, Ph.D.
John D. Leonard II, Ph.D.**

March 16, 1999

Maximum Predicted Concentrations

CORSIM 1998 a.m.

All receptors in the area remained below 10 ppm.

CORSIM 2005 a.m.

All receptors in the area remained at or below 10 ppm.

CORSIM 2025 a.m.

All receptors in the area remained below 10 ppm.

CORSIM 1998 p.m.

All receptors in the area remained below 10 ppm.

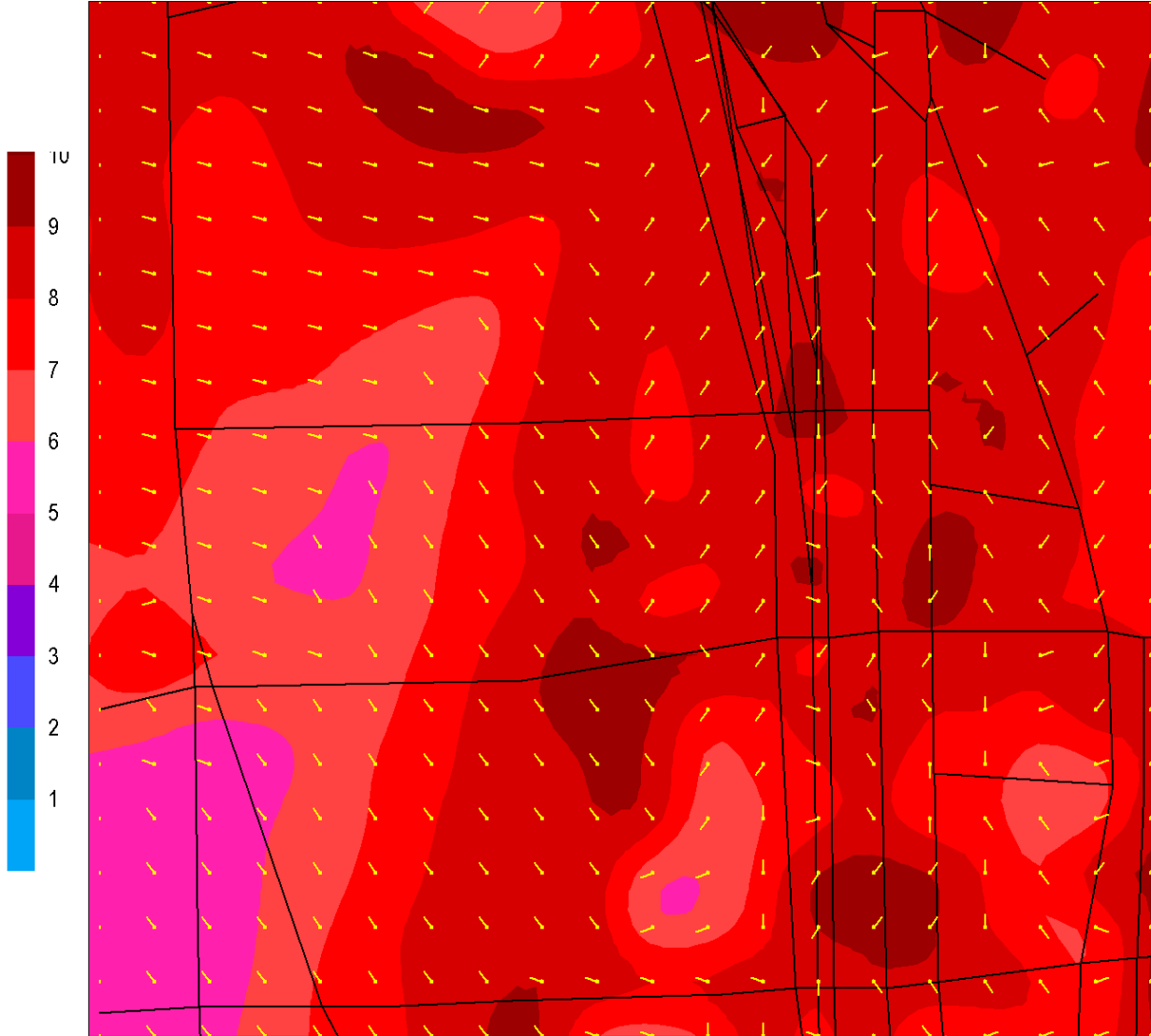
CORSIM 2005 p.m.

All receptors in the area remained at or below 10 ppm.

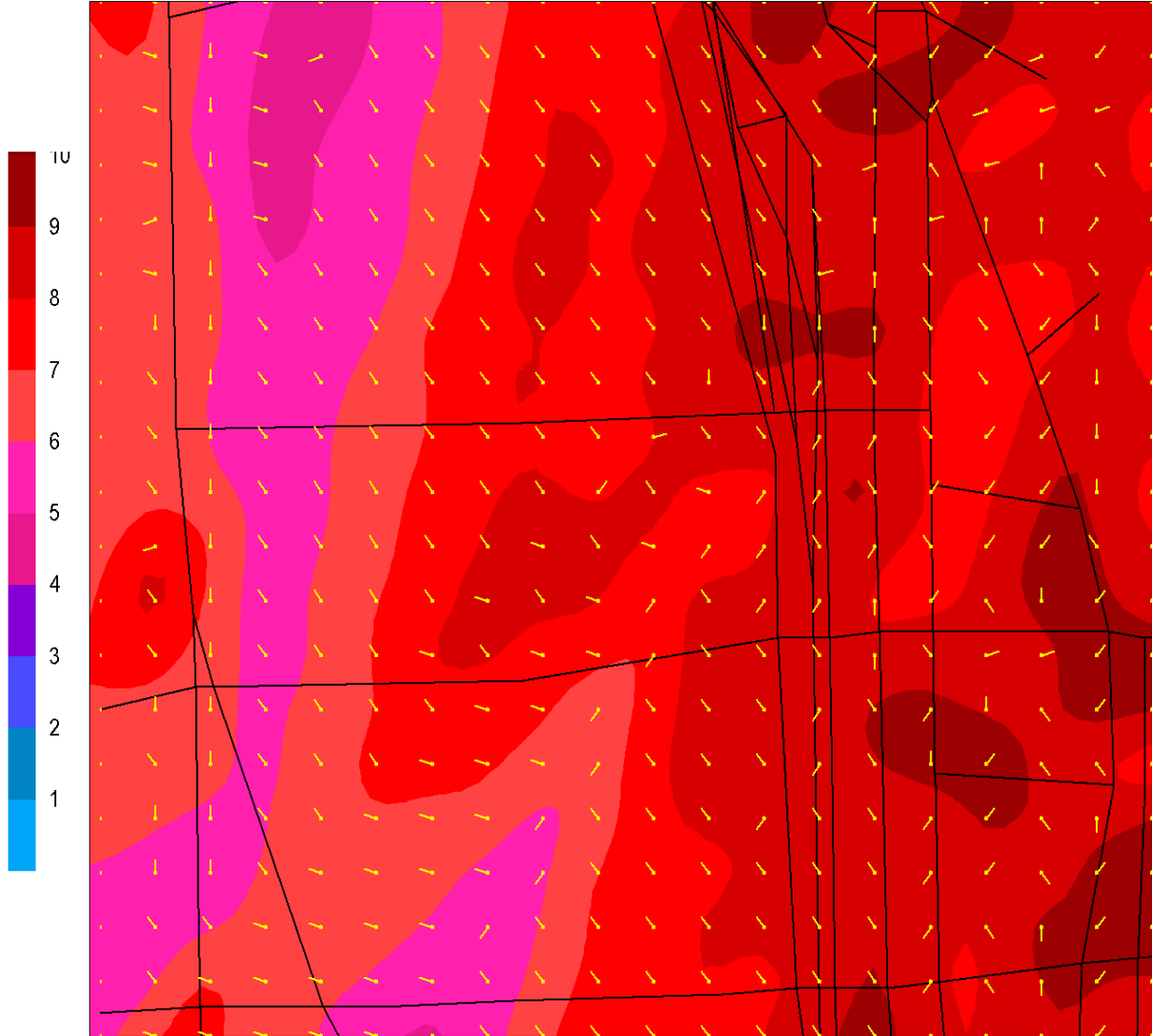
CORSIM 2025 p.m.

All receptors in the area remained below 10 ppm.

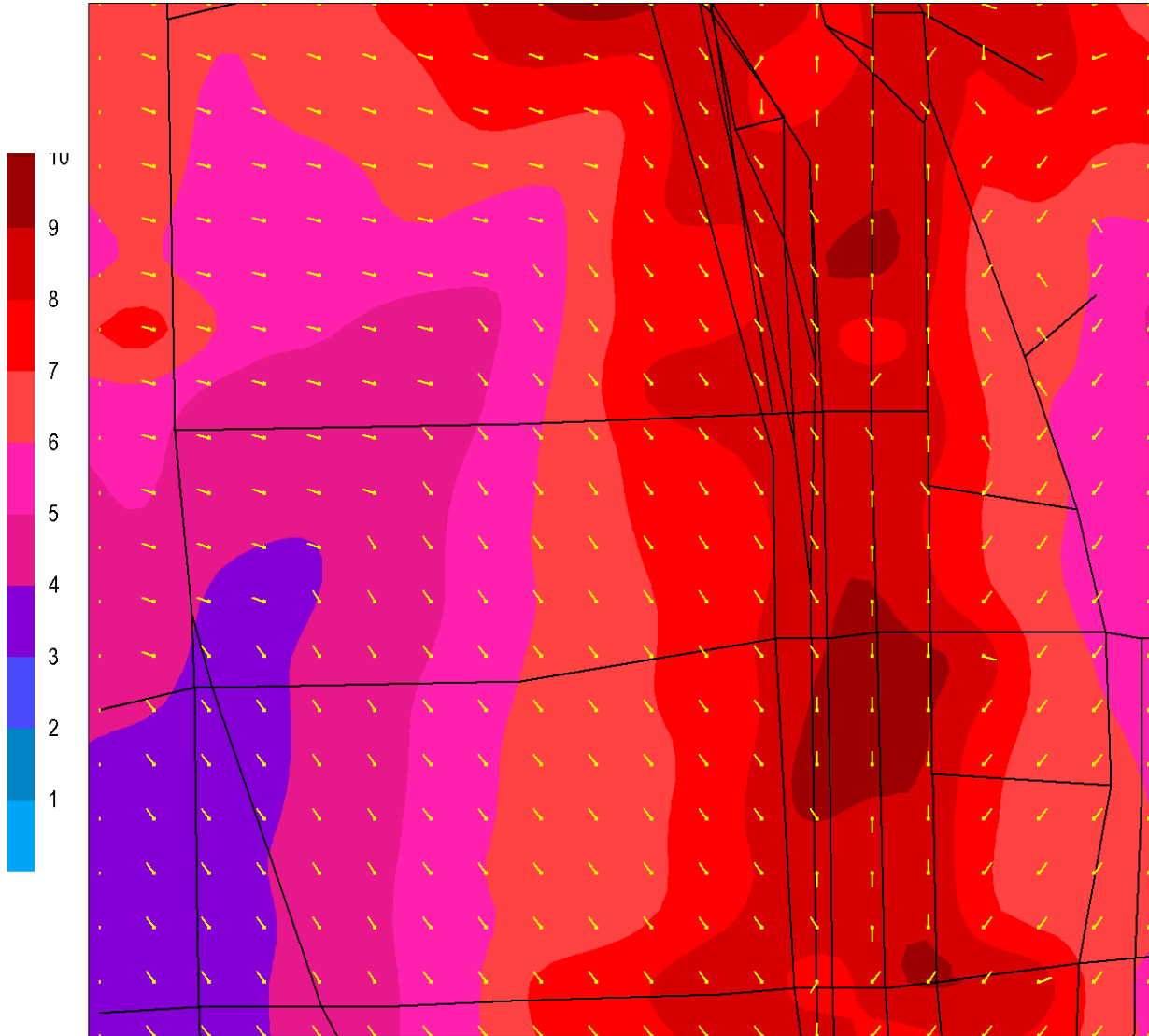
CORSIM Scenario Analysis, 1998 a.m.



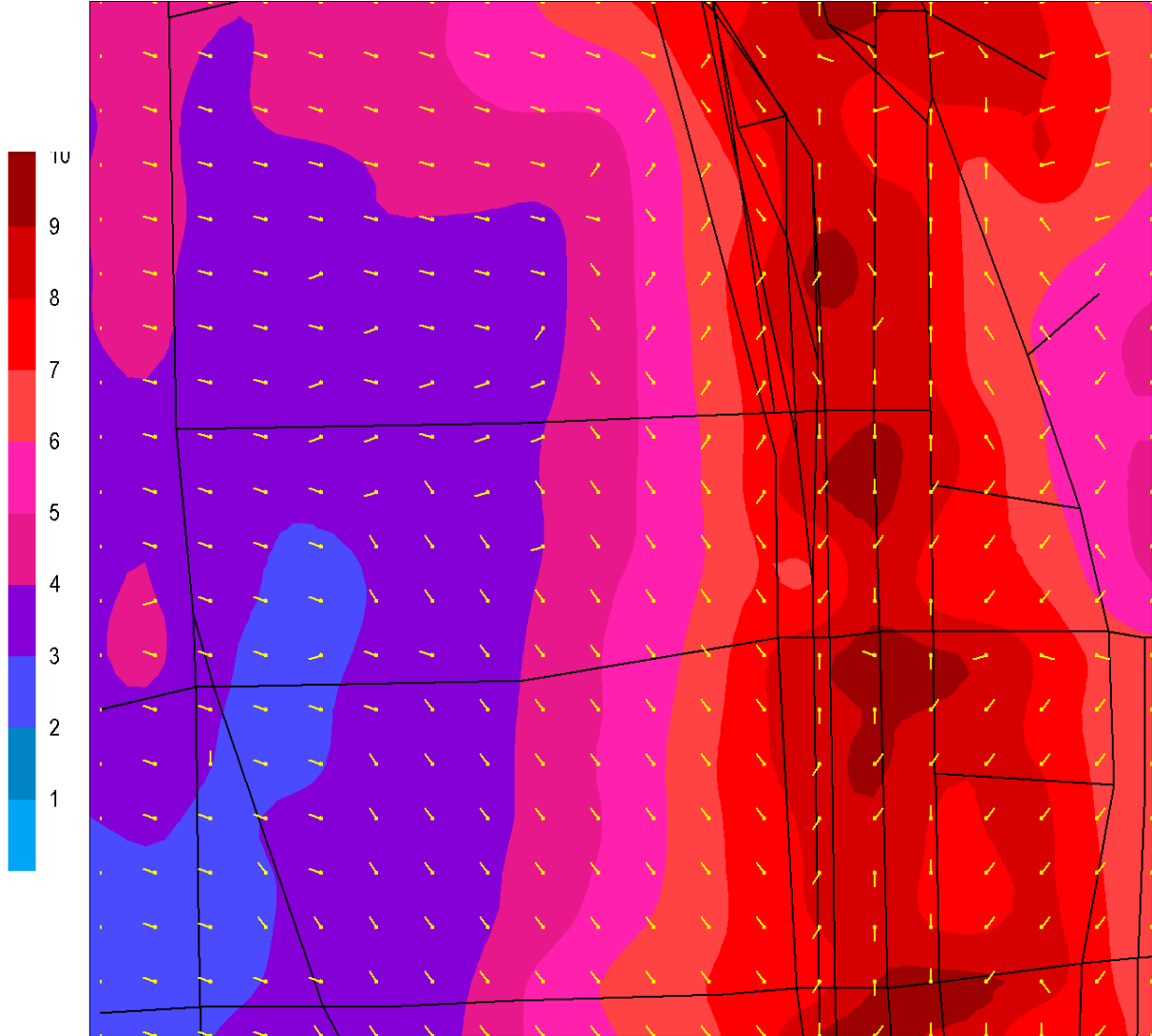
CORSIM Scenario Analysis, 2005 a.m.



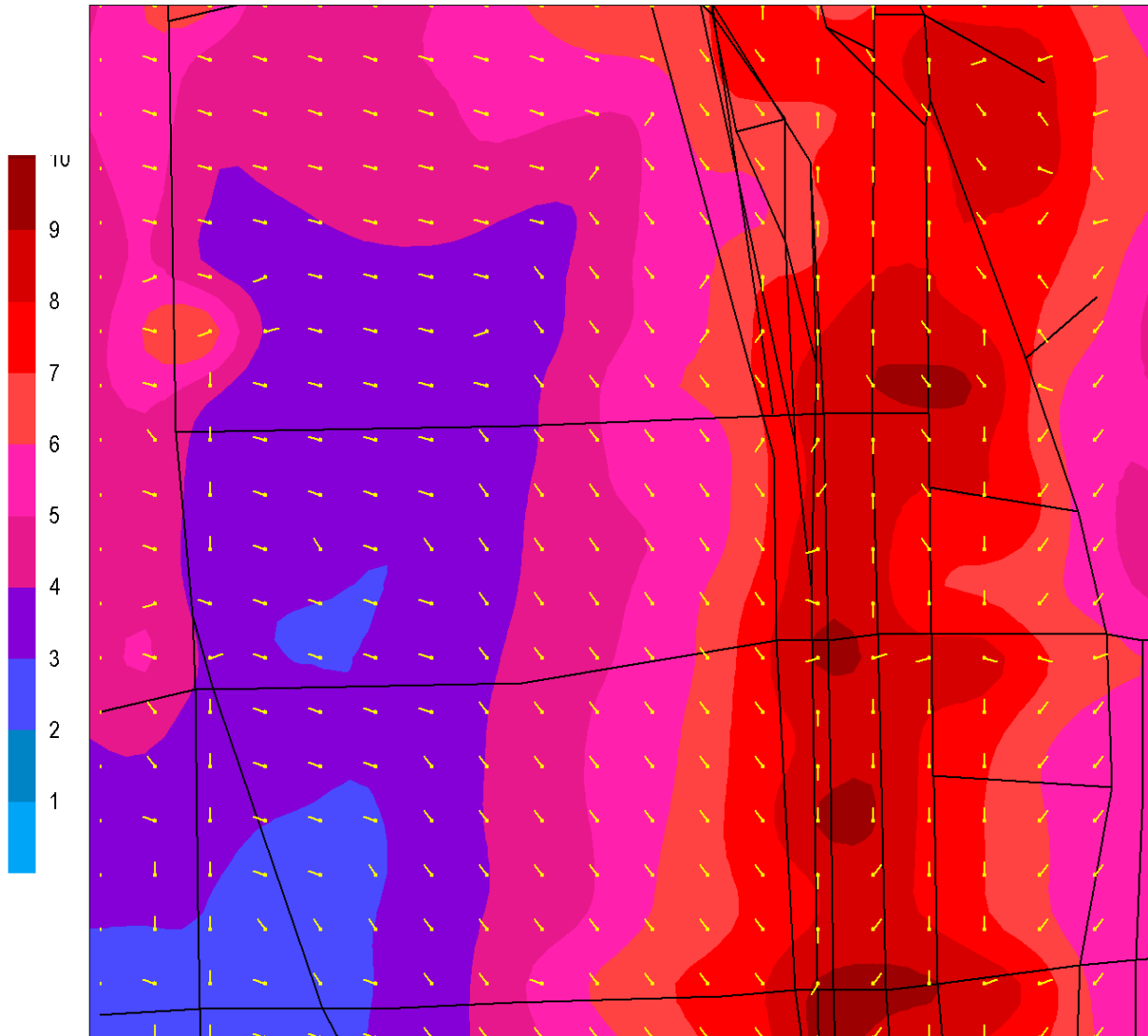
CORSIM Scenario Analysis, 2025 a.m.



CORSIM Scenario Analysis, 1998 p.m.



CORSIM Scenario Analysis, 2005 p.m.



CORSIM Scenario Analysis, 2025 p.m.

